

FINAL

FCC Approval Granted 3/18/97

Revised 03/06/03

**STATE OF MAINE
EMERGENCY ALERT SYSTEM
OPERATIONAL PLAN**

The Maine State Emergency Communications Committee acknowledges the following organizations for their assistance in developing this plan:

Maine Public Broadcasting, the Maine Association of Broadcasters, the New England Cable Television Association, the Maine Emergency Management Agency, the Maine Department of Public Safety/Maine State Police, the National Weather Service, state and local officials, and representatives of the broadcasters and cable system operators of the State of Maine.

EMERGENCY ALERT SYSTEM (EAS) CHECKLIST FOR BROADCAST STATIONS AND CABLE SYSTEMS

Your EAS Operational Area is _____

EAS Monitoring Assignment # 1 _____

EAS Monitoring Assignment # 2 _____

EAS Monitoring Assignment # 3 _____

- _____ 1. All personnel are trained in EAS procedures and in the use of EAS equipment.
- _____ 2. EAS encoders and decoders are installed and operating.
- _____ 3. Correct assignments are monitored, according to State or local EAS plans.
- _____ 4. Weekly and monthly EAS tests are received and logged.
- _____ 5. Weekly and monthly EAS test transmissions are made and logged.
- _____ 6. FCC EAS Operating Handbook is immediately available.
- _____ 7. Copy of State (and, if applicable, local) EAS plan is immediately available.
- _____ 8. Copies of FCC EAS Rules and Regulations (Part 11) and, if appropriate, AM station emergency operation (Section 73.1250) are available.

TABLE OF CONTENTS

Preamble	6
I. Purpose and Authority; Introduction	7
II. National, State and Local EAS: Participation and Priorities	9
A. National EAS Participation	
B. State and local EAS Participation	
C. Conditions of EAS Participation	
D. EAS Priorities	
E. General considerations	
III. Organization and Concepts of Maine EAS	10
A. EAS Designations	
B. Other Definitions	
C. Delivery Plan	
D. Local Area Planning	
IV. Activation of the Maine EAS	12
A. State level activation	
B. Local level activation	
C. General procedures for use of broadcast stations and cable systems	
D. Guidance for originators of EAS alerts	
1. Guidance for Emergency Services personnel	
2. Guidance for National Weather Service personnel	
3. Guidance for Nuclear Power Plant personnel	
V. Implementation of an EAS Activation	14
A. Procedures for State Activating Officials	
B. Procedures for Warning Point operating personnel	
C. Procedures for broadcast stations and cable systems	
VI. Maine EAS Scripts and Formats	17
A. State activation	
B. Regional or local activation	
VII. List of officials designated to activate the Maine EAS	19

Continued on next page

TABLE OF CONTENTS continued

Appendix A: Authentication Procedures to be used to Activate the Maine EAS20

Appendix B: State EAS Broadcast Station Information21

Appendix C: State EAS Cable System Information25

Appendix D: Programming EAS Decoders; EAS Codes Transmitted by Key Sources26

 1. EAS Header Code Information

 A. EAS Header Code Analysis

 B. Maine Originator Codes

 2. Maine Event Codes

 3. Maine Regional Codes

 4. Local Codes

Appendix E: State EAS Network31

Appendix F: EAS Operational Areas32

Appendix G: Communications between the Maine Emergency Management Agency, the
National Weather Service and the Broadcast and Cable Facilities of the State of Maine35

Appendix H: Programming EAS Decoders36

Appendix I: EAS Tests37

 1. General Notes

 2. Requirements

 3. Required Weekly Test

 4. Required Monthly Test

 5. Time-Duration and County-Location Codes to be Used

 6. Test Scripts and Formats

Appendix J: Members of the Maine State Emergency Communications Committee42

Appendix K: State Relay Network map43

Appendix L: FCC Mapbook for Maine44

PREAMBLE

Federal Communications Commission (FCC) Rules § 11.41, Participation in EAS:

- (a) All broadcast stations and cable systems specified in § 11.11 are categorized as Participating National (PN) sources unless authorized by the FCC to be a Non-Participating National (NN) source.
- (b) A broadcast station or cable system may submit a written request to the FCC asking to be a Non-Participating National (NN) source. The FCC may then issue a Non-participating National Authorization letter. NN sources must go off the air during a national EAS activation.
 - (1) Any existing station that is a Non-Participating National (NN) source under § 11.18(f) of this part that wants to become a Participating National (PN) source in the national level EAS must submit a written request to the FCC.
 - (2) NN sources may voluntarily participate in the State and Local Area EAS. Participation is at the discretion of broadcast station and cable system management and will be in accordance with the provisions of State and Local Area EAS Plans.
- (c) All sources, including NN, must have access to an EAS Operating Handbook and a Red Envelope Authenticator List and be placed on the EAS mailing list maintained by the FCC.

If Maine broadcasters or cable system operators choose not to participate in the Maine EAS System at the state or local level, they must so indicate in writing to the chair of the Maine State Emergency Communications Committee. [Cable systems must notify the SECC chair in writing within six months after the FCC issues final EAS rules for cable.]

Non-participation does not relieve a broadcaster or cable system operator from the obligation to install and maintain a digital decoder as required in FCC §11.11.

I. PURPOSE AND AUTHORITY; INTRODUCTION

A. PURPOSE

This plan is the document mandated by the Federal Communications Commission outlining the organization and implementation of the State of Maine Emergency Alert System (EAS). It sets forth procedures for broadcast station and cable system personnel and designated government officials to disseminate emergency information and instructions in threatened or actual emergencies.

This plan is the guideline for Maine broadcasters and cable system operators to determine:

- Their mandated and optional monitoring assignments;
- the codes to be used in the EAS Header sequence in this state;
- the schedule of the Required Monthly Tests (RMTs) which must be relayed by all broadcasters and cable operators within 60 minutes of reception; and
- any other elements of the EAS which are unique to the State of Maine.

B. AUTHORITY

Title 47 U.S.C. 151, 154(i) and (o), 303(r), 524(g) and 606; and 47 C.F.R. Part 11, FCC Rules and Regulations, Emergency Alert System (EAS) as pertains to day-to-day emergency operations.

This plan is an adjunct to the FCC EAS Rules and is not meant to be a summary, in whole or in part, of those Rules. FCC Rules, Part 11, contain the general rules regarding the Emergency Alert System.

C. INTRODUCTION

These procedures were prepared by the Maine State Emergency Communications Committee (SECC) in cooperation with Maine Public Broadcasting, the Maine Emergency Management Agency (MEMA), the National Weather Service (NWS) offices in Gray and Caribou, Maine, the Federal Communications Commission (FCC), state and local officials, and representatives of the broadcasters and cable operators of Maine. It provides background data and prescribes specific procedures for the broadcast and cable media to transmit emergency information and warnings to the public in the State of Maine, or any portion thereof within the broadcast coverage or cable system service area, at the request of designated government officials.

A CAUTIONARY NOTE:

With the EAS system, emergency services agencies have acquired a valuable new tool in gaining direct access to the public through broadcasters and cable operators. However, if it is not used prudently, there is danger of destroying the effectiveness of this tool.

Broadcasters, cable operators, and the public expect that the EAS will be used only for sudden, unpredictable, or unforeseen events that pose an immediate threat to public health or safety, the nature of which precludes advance notification or warning. In many cases, as for example with weather-related events such as winter storms, modern technology and standard news-dissemination practices provide ample notice to the public, thereby precluding the need to declare an emergency.

Emergency services personnel are urged to keep in mind that some broadcasters and cable operators keep their EAS decoders set on Automatic mode. Unattended operation of broadcast or cable facilities means there is no one available to screen an EAS message and decide whether it should be aired. They are depending on you to send EAS alerts only for very serious emergencies. The first time EAS is triggered for a frivolous event, public confidence in the system will be diminished.

FCC Rules § 11.45 prohibit the transmission of EAS codes or attention signal in any circumstance other than an actual emergency or authorized test.

Emergency services personnel should also remember that broadcasters and cable operators participate in the state-level EAS on a voluntary basis. No one can force them to carry your EAS alerts. Maintaining a good relationship with local broadcasters and cable operators is critical to their support for civil authorities during an actual crisis.

II. NATIONAL, STATE AND LOCAL EAS: PARTICIPATION AND PRIORITIES

A. National EAS Participation

All broadcasters* and all cable operators are required to participate in the National-level EAS unless sanctioned as Non-Participating National (NN) by the FCC. “PN” (Participating National) stations and all cable operators will carry a Presidential message; “NN” (Non-Participating National) stations will make an announcement and sign off the air.

Broadcast stations may override the EAS audio feed during a national EAS alert and substitute an audio feed of the President’s message from another source. Broadcast stations may not delay the transmission of national EAS messages in order to substitute alternative audio feeds. Rather, broadcast stations must continue to transmit all national EAS messages immediately upon receipt. [FCC Report & Order, EB Docket No. 01-66, 2/26/02, at paragraphs 58-59.]

In addition, all broadcasters and cable operators must transmit a Required Weekly EAS Test (RWT), and, once a month, must re-transmit the Required Monthly Test (RMT) within 60 minutes of receiving it on their EAS Decoder. These actions are required of all broadcasters and cable operators, regardless of their “PN” or “NN” EAS status.

B. State/Local EAS Participation

Participation in the State and/or Local Area EAS is voluntary for all broadcasters and cable operators. However, any stations/operators electing to participate in the State and/or Local Area EAS must then follow the procedures outlined in this Plan.

NOTE: Even though they elect not to carry National EAS Alerts, stations designated “NN” (Non-Participating National) may participate in the State and/or Local Area EAS without any prior FCC approval.

C. Conditions of EAS Participation

Acceptance of or participation in this plan shall not be deemed a relinquishment of program control and does not prohibit a broadcast licensee or cable system operator from exercising his/her independent discretion and responsibility in any given situation. The FCC Rules and Regulations, Part 11, provide for the management of each broadcast station or cable system to exercise discretion regarding the transmission of emergency messages and instructions to the public. Broadcast stations and cable systems originating EAS emergency communications shall be deemed to have conferred rebroadcast authority as specified in Section §11.54(d).

** Low-power FM (LPFM) stations are required to participate in EAS by installing EAS decoders only. 15 FCC Rcd at 2280. LPFM stations are not required to install EAS decoders until one year after the Federal Communications Commission publishes in the Federal Register a public notice indicating that at least one EAS decoder has been certified. FCC Report & Order, EB Docket No. 01-66, 2/26/02, at paragraph 75.*

D. EAS Priorities

Broadcasters and cable operators are reminded that the EAS Priorities as set forth in the FCC Rules are as follows:

1. National EAS Messages
[Presidential messages with event code EAN take priority and must preempt any other message in progress]
2. Local Area EAS Messages
3. State EAS Messages
4. Messages from the National Information Center (NIC) [these are follow-up messages after a National EAS Activation].

E. General Considerations

The listening and viewing habits of the public are conducive to the positive effectiveness of the EAS. The instinctive reaction of the average person is to turn on a radio or television set in time of emergency. However, continuing public education is required to increase public awareness of the EAS as an established medium for the receipt of emergency information at the Local, State, and National levels.

III. ORGANIZATION AND CONCEPTS OF MAINE EAS

A. EAS Designations

The FCC's EAS Station Designations reflect the EAS status of every broadcaster and cable operator. The "FCC Mapbook" in Appendix L of this plan lists all stations and their EAS designations.

DESIGNATED GOVERNMENT OFFICIALS: The person or persons designated by governments signatory to this procedure to request activation of the EAS and to make emergency announcements (see Appendix A).

STATE PRIMARY SOURCE (SP): The broadcast facility that serves as the entry facility for state-level EAS messages originating from the designated government officials referred to in Appendix A.

The Maine Public Radio Network serves as the SP.

The alternate State Primary will consist of the following stations:

WBLM-FM, 102.9, Portland
WTOS-FM, 105.1, Skowhegan
WHCF-FM, 88.5, Bangor
WQHR-FM, 96.1, Presque Isle

For ease of understanding, the State Primary and Alternate State Primary stations will hereinafter be collectively referred to as the SP.

STATE EMERGENCY COMMUNICATIONS COMMITTEE: The persons, appointed by the FCC, who are charged with planning and overseeing Emergency Alert System operations.

STATE RELAY SOURCE (SR): The Maine Public Broadcasting System microwave network (see Appendix K).

LOCAL PRIMARY: The source of EAS Local Area messages, responsible for coordinating the carriage of emergency messages as specified in a Local Area Plan. [See Paragraph D below]

B. Other Definitions

EMERGENCY: A situation posing an unforeseen and extraordinary threat to the safety of life and property. Examples include, but are not limited to, natural situations such as tornadoes, flash floods, or widespread fires; and man-made situations such as discharge of toxic gases, widespread power failures, industrial explosions, civil disorders or nuclear incidents.

STATE EMERGENCY OPERATIONS CENTER: The state government facility where the government's emergency response is coordinated.

STATE EMERGENCY RESPONSE TEAM (ERT): The persons designated by the Governor of the State of Maine who are charged with planning and executing emergency operations. The State ERT operates from the State EOC and is more fully described in the Maine Emergency Management Agency's Emergency Operations Plan.

STATE WARNING POINT (SWP): The State Government facility that originates EAS and other warnings. For purposes of the Maine EAS Plan, the Maine State Police (MSP) headquarters in Augusta will be the Primary SWP and the Maine Emergency Management Agency (MEMA) will be the Alternate SWP (hereinafter collectively referred to as SWPs).

C. Delivery Plan

This plan was designed to set up primary and alternate delivery methods for state-level EAS alerts. Stations which elect to monitor only the two assigned FCC-mandated sources will have two paths for all alerts. Consult Appendix E, "State EAS Relay Network," to determine the specific sources that each broadcaster and cable operator should monitor.

D. Local Area Planning

The Maine SECC has written this plan to design the delivery system for National and State level alerts and messages. It is not within the scope of this plan to set up local area alert plans. Some local areas have already developed sophisticated local emergency response plans involving local EMA offices and county or local law enforcement departments. Local broadcast stations and cable operators are encouraged to develop a relationship with their local emergency agencies and assist with the development of local EAS plans.

For unique local emergency situations not involving the entire state, local authorities may request local-area EAS activation. In such circumstances, local authorities should contact the SP (Maine State Police or Maine Emergency Management Agency) to request activation, as the EAS can be activated to provide warnings to specific sub-areas of the state.

Local authorities are reminded that Local Area Plans must follow the protocols and procedures set forth in this Plan and in FCC Rule 11.

Where no local EAS plan exists, local authorities may request local-area EAS activation for local emergency situations through the SWPs (Maine State Police or Maine Emergency Management Agency). The SWPs can activate EAS to provide warnings to specific sub-areas of the state.

IV. ACTIVATION OF THE MAINE EAS

A. State level activation

The Maine State EAS is activated by request of authorized officials made to the Maine EAS SWPs. Maine Public Radio's primary studio in Bangor, Maine, is the primary originating distribution point of EAS messages at the State level. Alternate SP sources should monitor the SP source according to the Maine EAS State Network (see Appendix E) for further dissemination of State level emergency information to all other stations and cable systems and the public.

B. Local level activation

Authorized officials may make requests for Local Area activation. In the absence of an approved EAS Local Area Plan, local officials should route their requests to the SWPs.

C. General procedures for use of broadcast stations and cable systems

1. The National Weather Service offices in Gray and/or Caribou, Maine, will broadcast all severe weather warnings over the NOAA Weather radio system and may activate the State EAS for the weather events listed in Appendix D, sec. 2.2. The SP may, at its discretion, activate EAS for additional weather events. Local stations are encouraged to monitor NOAA Weather radio directly, where possible, as a source of local severe weather warning information.
2. When a civil emergency exists, the Governor or a designated state official (see Appendix A) may request activation of the Maine EAS through the SWPs.
3. For emergencies not involving the entire state, authorities may request activation of the EAS through the SWPs. The EAS can be activated to provide warnings to specific areas (see Appendix D).
4. The Maine State Emergency Communications Committee and the Maine Emergency Management Agency jointly will authorize officials to request EAS activation under this plan and distribute authentication procedures to be used when requesting activation of the Maine EAS. These procedures for authentication are on a need-to-know basis and are therefore not included in this plan.

D. Guidance for originators of EAS Alerts

1. Guidance for Emergency Services Personnel

The Emergency Alert System is designed so that agencies with an emergency message will need to transmit that message only once, and it will be received by all area broadcasters and cable operators simultaneously. The most accessible way to accomplish this is via the State Warning Points as outlined in Section VII. In order to generate an EAS message for transmission to

broadcasters and cable operators, a device called an EAS Encoder is needed. This encoder transmits by radio, telephone, or microwave to broadcasters and cable operators, automatically triggering their EAS decoders to deliver the message.

2. Guidance for National Weather Service Personnel

NWS personnel issue EAS Weather Alerts via the NOAA Weather Radio (NWR) using the NOAA-SAME/EAS Codes. NWS procedures should be followed relating to the transmission of the SAME/EAS Codes, the 1050 Hz Alert Tone, and the reading of the Weather Bulletin script. Alerts for events other than weather emergencies will originate with state or local EMAs and may be broadcast as civil emergency messages by NWS personnel over NWR at the request of the SWPs.

3. Guidance for Nuclear Power Plant Personnel

Emergency notification for the Maine Yankee Nuclear Power Plant in Wiscasset is relayed to state officials via a dedicated telephone circuit between the Plant's control room and the Maine State Police Headquarters in Augusta, in accordance with procedures established in the State Emergency Response Plan. Further requirements for nuclear power plant events are contained in Volume 8 of the state's Radiological Emergency Response Plan, incorporated by reference.

V. IMPLEMENTATION OF AN EAS ACTIVATION

A. Procedures for State Activating Officials

General Considerations:

Whenever possible, officials contemplating EAS activation should provide advance notice to the State Warning Point (State Police or MEMA). SWP should provide advance notice to the State Primary (SP) or Alternate State Primary. Make requests for activation of the EAS using the prearranged authentication procedures (see Appendix A).

Work out program details (i.e., live or recorded, real-time or delayed) with the station duty operator. If necessary, record the emergency message.

SP will program the EAS encoder with the appropriate emergency information, selecting the affected area, length of activation, and emergency message.

Procedure:

1. Prepare EAS message.

Is the message based only on confirmed facts? Are instructions accurate and concise?

(Note: EAS messages, in their entirety, should not exceed two minutes in length, including all necessary codes. The EAS message should not exceed one minute, 30 seconds.)

2. Call the State Warning Point (State Police or MEMA).
3. Use the following format when delivering the emergency announcement.

a. “THIS IS (name / title) OF (jurisdiction) WITH A REQUEST TO ACTIVATE THE MAINE EMERGENCY ALERT SYSTEM.

b. Situation summary (describe the nature of the emergency).

c. Inform Warning Point personnel of the area to be activated and the message time duration.

d. Read the emergency message for recording by the Warning Point.

Use the following format:

“WE INTERRUPT THIS PROGRAM TO ACTIVATE THE MAINE EMERGENCY ALERT SYSTEM FOR AN ANNOUNCEMENT FROM (name, title and/or jurisdiction).

Continue with message text.

Conclude message with:

if applicable: “STAY TUNED (or “tune to:” channel or frequency) FOR ADDITIONAL INFORMATION.”

Mandatory: “THIS CONCLUDES OPERATIONS OF THE MAINE EMERGENCY ALERT SYSTEM.”

e. Verify successful recording by the SWP before terminating call. Re-record if necessary.

4. Terminate Maine EAS activation.

B. Procedures for Warning Point operating personnel.

1. Verify Authentication.

2. Advise the **SP** of impending activation (time permitting).

3. Program the EAS encoder with the message type, affected area, and message time duration header codes for the area(s) and time requested by the activating official.

4. Record the emergency message.

5. Program EAS encoder with End Of Message (EOM) code.

6. Transmit the EAS message to the **SP**.

Detailed instructions for warning point personnel are contained in their respective MSP and MEMA internal EAS SOP's.

C. Procedures for broadcast stations and cable systems

1. Upon receipt of a request to activate EAS from the state warning point, the **SP** will immediately interrupt normal programming and broadcast the EAS message as received in its entirety. Since the request is received via a private circuit, no authentication is required.

2. If the request is from another authorized source: authenticate, determine if the message needs statewide distribution, and begin recording all emergency messages as follows:

- a. Transmit the Emergency Alert System header codes and Attention Signal.
- b. The header codes will be generated by the MEMA, Maine State Police, or National Weather Service encoder. The State Primary (SP) encoder will rebroadcast the programmed information.
- c. Transmit the entire emergency program, from header codes to EOM, as received from the requesting authority.

2. Upon receipt of a State level emergency action notification, each broadcast station and cable system will, at the discretion of management, perform the same procedures as outlined in C.1. above, including recording all emergency messages.
3. To avoid unnecessary escalation of public confusion, all emergency services personnel, as well as broadcast stations and cable systems, must be cautious in providing information and news about the emergency. All messages must be based on definite and confirmed facts. The public must not be left to decide what is or is not factual.
4. Upon completion of the above transmission procedures, resume normal programming. Make notations in station and cable logs of all significant events. These records should be carefully preserved in the event they are required later (FCC §11.55). Stations and cable systems may send a very brief summary to the FCC for information purposes.

Broadcast stations and cable systems are permitted to program their EAS equipment to preselect which EAS messages containing state and local event codes they wish to display and log. This will relieve EAS participants from the burden of logging unwanted messages, e.g., messages that do not apply to a participant's service area or messages concerning events which the participant has decided not to transmit. Broadcast stations and cable systems may upgrade their existing EAS equipment to include the selective displaying and logging capability on an optional basis until the equipment is replaced. [FCC EAS Report & Order, EB Docket No. 01-66, at paragraph 45.]

5. If operations were not concluded as specified in C.1.c. above: Upon receipt of the termination notice from the activating official, transmit the End Of Message code.

VI. MAINE EAS SCRIPTS AND FORMATS

Statewide tests of the Maine Emergency Alert System will be conducted according to FCC Part 11 criteria. See Appendix I for more information.

A. State Activation

The State activating authorities shall use the following format for transmitting EAS messages to Maine broadcasters and cable operators via the network described in Appendix E.

1. Send EAS Header Code 3 times (one-second pause between each)
2. One-second pause
3. Send EAS Attention Signal (0:08)
4. Send ACTIVATION SCRIPT:

“WE INTERRUPT THIS PROGRAM TO ACTIVATE THE STATE OF MAINE EMERGENCY ALERT SYSTEM BECAUSE OF A STATEWIDE EMERGENCY.

“THIS MESSAGE IS ORIGINATING FROM

[the Maine Emergency Management Agency in Augusta]

[the State Police Regional Communications Center in Augusta].

“THE FOLLOWING IS AN ANNOUNCEMENT FROM

[the Governor of the State of Maine]

[an authorized representative of the Governor of the State of Maine].”

5. Governor/representative gives live or recorded address, NOT TO EXCEED ONE MINUTE, factually describing the nature of the emergency and the recommended public action.
6. Following the address, send TERMINATION SCRIPT:

“THIS CONCLUDES PROGRAMMING OF THE MAINE EMERGENCY ALERT SYSTEM. ALL BROADCAST STATIONS AND CABLE SYSTEMS MAY NOW RESUME NORMAL OPERATION.”

7. One-second pause
8. Send EAS End-of-Message (EOM) Code 3 times (one-second pause between each)

B. Regional or Local Activation

Areas which have developed a specific Local Area EAS Plan will have their own Activation Format presented in their Local Area Plan. The following is a suggested Local Area Activation Format for general use in emergencies that are not of statewide scope. It

is recommended that this format be used for emergencies affecting one or more of the four EAS Regions outlined in Appendix F.

1. Stop regular programming
2. Send EAS Header Code 3 times, with a one-second pause between each [use Event Code(s) from list provided in “Maine Event Codes” in Appendix D].
3. One-second pause
5. Send EAS Attention Signal (0:08)
5. Send ACTIVATION SCRIPT:

“WE INTERRUPT THIS PROGRAM TO ACTIVATE THE STATE OF MAINE EMERGENCY ALERT SYSTEM SERVING THE

(name all that apply:)

**NORTHEAST
SOUTHEAST
NORTHWEST
SOUTHWEST**

REGION(S) OF THE STATE. AT THE REQUEST OF [Emergency Agency], ALL EAS STATIONS IN [Region(s)] SHOULD RE-BROADCAST THE FOLLOWING [type of alert (matches event code)] ANNOUNCEMENT.”

6. Broadcast emergency message.
7. Following the message, send TERMINATION SCRIPT:

“THIS CONCLUDES PROGRAMMING OF THE MAINE EMERGENCY ALERT SYSTEM. ALL BROADCAST STATIONS AND CABLE SYSTEMS SERVING THE _____ REGION(S) OF THE STATE ARE REQUESTED TO RE-BROADCAST THE PRECEDING ANNOUNCEMENT, WHICH WAS ISSUED BY [emergency agency]. WE NOW RESUME NORMAL OPERATIONS.”

8. One-second pause
9. Send End-of-Message (EOM) Code 3 times, with one-second pause between each.

VII. LIST OF OFFICIALS DESIGNATED TO ACTIVATE MAINE EAS

EAS messages generally originate from the following officials or their authorized designees:

Governor, State of Maine

Director, Maine Emergency Management Agency

Meteorologist in Charge, National Weather Service, Gray

Meteorologist in Charge, National Weather Service, Caribou

Chief, Maine State Police

Designated officials representing the above-mentioned agencies are the only individuals authorized to request statewide activation of the Maine EAS. In the absence of a local EAS plan, local officials requesting local or regional activation of EAS are advised to route their request through the State Warning Points (the Maine State Police or the Maine Emergency Management Agency).

APPENDIX A

AUTHENTICATION PROCEDURES TO BE USED TO ACTIVATE THE MAINE EAS

The management of the State Primary source and concerned officials will determine the authentication to be used for activation.

Note: National Weather Service (NWS) warnings received via NOAA Weather Radio, NOAA Weather Wire, or Associated Press, Reuters or UPI wire services do not need additional authentication.

1. Maine State Police, 207-624-7000 or 800-452-4664
2. National Weather Service, Gray, 207-688-3221/3222 ext.223
3. National Weather Service, Caribou, 207-496-0139
4. State EOC / MEMA, 207-624-4400, fax 207-287-3178

The Maine State Emergency Communications Committee and the Maine Emergency Management Agency jointly will authorize officials to request EAS activation under this plan and will distribute authentication procedures to be used when requesting activation of the Maine EAS. These procedures for authentication are on a need-to-know basis and are therefore not included in this plan.

Monitoring Assignments and FIPS Codes

APPENDIX B: STATE EAS BROADCAST STATION INFORMATION

CALL		City	Primary	Second	Regional	County 1	County 2	County 3	County 4	County 5	County 6	County 7
WABI	TV	Bangor	MPR	WHCF	923000	023019	023029	023009	023027			
WABI	AM	Bangor	MPR	WHCF	923000	023019	023029	023009	023027			
WABK	AM	Ellsworth	MPR	WHCF	923000	023019	023029	023009	023027			
WAGM	TV	Presque Isle	MPR	WQHR	323000	023003	323019					
WALZ	FM	Machias	MPR	WHCF	923000	023019	023029	023009	023027			
WBAE	AM	Portland	MPR	WBLM	723000	023031	023005	023001	023023	023015	023013	023011
WBCI	FM	Bath	MPR	WBLM	723000	023031	023005	023001	023023	023015	023013	023011
WBCQ	SW	Greenbush	MPR	WHCF	923000	023019	023029	023009	023027			
WBFB	FM	Belfast	MPR	WHCF	923000	023019	023029	023009	023027			
WBGR	TV	Bangor	MPR	WHCF	923000	023019	023029	023009	023027			
WBLM	FM	Portland	MPR	WTOS	723000	023031	023005	023001	023023	023015	023013	023011
WBOR	FM	Brunswick	MPR	WBLM	723000	023031	023005	023001	023023	023015	023013	023011
WBPW	FM	Presque Isle	MPR	WQHR	323000	023003	323019					
WBQQ	FM	Kennebunk	MPR	WBLM	723000	023031	023005	023001	023023	023015	023013	023011
WBQW	FM	Scarborough	MPR	WBLM	723000	023031	023005	023001	023023	023015	023013	023011
WBQX	FM	Thomaston	MPR	WBLM	723000	023031	023005	023001	023023	023015	023013	023011
WBZN	FM	Old Town	MPR	WHCF	923000	023019	023029	023009	023027			
WCKD	TV	Bangor	MPR	WHCF	923000	023019	023029	023009	023027			
WCLZ	FM	Brunswick	MPR	WBLM	723000	023031	023005	023001	023023	023015	023013	023011
WCME	FM	Boothbay Harbor	MPR	WBLM	723000	023031	023005	023001	023023	023015	023013	023011
WCRQ	FM	Dennyville	MPR	WHCF	923000	023019	023029	023009	023027			
WCSH	TV	Portland	MPR	WBLM	723000	023031	023005	023001	023023	023015	023013	023011
WCTB	FM	Fairfield	MPR	WTOS	123000	023017	023007	023025	023021			
WCXU	FM	Caribou	MPR	WQHR	323000	023003	323019					
WCXX	FM	Madawaska	MPR	WQHR	323000	023003	323019					
WCYI	FM	Lewiston	MPR	WBLM	723000	023031	023005	023001	023023	023015	023013	023011

Monitoring Assignments and FIPS Codes

CALL		City	Primary	Second	Regional	County 1	County 2	County 3	County 4	County 5	County 6	County 7
WCYY	FM	Biddeford	MPR	WBLM	723000	023031	023005	023001	023023	023015	023013	023011
WDEA	FM	Gardiner	MPR	WBLM	723000	023031	023005	023001	023023	023015	023013	023011
WDME	FM	Dover-Foxcroft	MPR	WHCF	923000	023019	023029	023009	023027			
WEBB	FM	Waterville	MPR	WBLM	723000	023031	023005	023001	023023	023015	023013	023011
WERU	FM	Blue Hill	MPR	WHCF	923000	023019	023029	023009	023027			
WEZQ	FM	Bangor	MPR	WHCF	923000	023019	023029	023009	023027			
WEZW	AM	Augusta	MPR	WBLM	723000	023031	023005	023001	023023	023015	023013	023011
WFAU	AM	Gardiner	MPR	WBLM	723000	023031	023005	023001	023023	023015	023013	023011
WFST	AM	Caribou	MPR	WQHR	323000	023003	323019					
WFZX	FM	Searsport	MPR	WHCF	923000	023019	023029	023009	023027			
WGAN	AM	Portland	MPR	WBLM	723000	023031	023005	023001	023023	023015	023013	023011
WGME	TV	Portland	MPR	WBLM	723000	023031	023005	023001	023023	023015	023013	023011
WGUY	FM	Dexter	MPR	WHCF	923000	023019	023029	023009	023027			
WHMX	FM	Bangor	MPR	NOAA	923000	023019	023029	023009	023027			
WHOU	FM	Houlton	MPR	WQHR	323000	023003	323019					
WHQO	FM	Skowhegan	MPR	WTOS	123000	023017	023007	023025	023021			
WHSN	FM	Bangor	MPR	WHCF	923000	023019	023029	023009	023027			
WIDE	AM	Biddeford	MPR	WBLM	723000	023031	023005	023001	023023	023015	023013	023011
WIGY	FM	Madison	MPR	WTOS	123000	023017	023007	023025	023021			
WJAE	AM	Westbrook	MPR	WBLM	723000	023031	023005	023001	023023	023015	023013	023011
WJBQ	FM	Portland	MPR	WBLM	723000	023031	023005	023001	023023	023015	023013	023011
WJCX	FM	Pittsfield	MPR	WTOS	123000	023017	023007	023025	023021			
WJJB	AM	Brunswick	MPR	WBLM	723000	023031	023005	023001	023023	023015	023013	023011
WJJB	FM	Topsham	MPR	WBLM	723000	023031	023005	023001	023023	023015	023013	023011
WJTO	AM	Bath	MPR	WBLM	723000	023031	023005	023001	023023	023015	023013	023011
WKCG	FM	Augusta	MPR	WBLM	723000	023031	023005	023001	023023	023015	023013	023011
WKIT	FM	Brewer	MPR	WHCF	923000	023019	023029	023009	023027			
WKSQ	FM	Ellsworth	MPR	WHCF	923000	023019	023029	023009	023027			
WKTJ	FM	Farmington	MPR	WTOS	123000	023017	023007	023025	023021			
WKTQ	AM	South Paris	MPR	WBLM	723000	023031	023005	023001	023023	023015	023013	023011
WLAM	AM	Lewiston	MPR	WBLM	723000	023031	023005	023001	023023	023015	023013	023011

Monitoring Assignments and FIPS Codes

CALL		City	Primary	Second	Regional	County 1	County 2	County 3	County 4	County 5	County 6	County 7
WLBZ	TV	Bangor	MPR	WHCF	923000	023019	023029	023009	023027			
WLKE	FM	Bar Harbor	MPR	WHCF	923000	023019	023029	023009	023027			
WLOB	AM	Portland	MPR	WBLM	723000	023031	023005	023001	023023	023015	023013	023011
WLOB	FM	Rumford	MPR	WTOS	123000	023017	023007	023025	023021			
WCMC	FM	Rockland	MPR	WHCF	923000	023019	023029	023009	023027			
WMDI	FM	Bar Harbor	MPR	WHCF	923000	023019	023029	023009	023027			
WMDR	AM	Augusta	MPR	WBLM	723000	023031	023005	023001	023023	023015	023013	023011
WMEB	FM	Orono	WHCF	NOAA	923000	023019	023029	023009	023027			
WMEK	FM	Auburn	MPR	WBLM	723000	023031	023005	023001	023023	023015	023013	023011
WMGX	FM	Portland	MPR	WBLM	723000	023031	023005	023001	023023	023015	023013	023011
WMHB	FM	Waterville	MPR	WBLM	723000	023031	023005	023001	023023	023015	023013	023011
WMME	FM	Augusta	MPR	WBLM	723000	023031	023005	023001	023023	023015	023013	023011
WMPG	FM	Gorham	MPR	WBLM	723000	023031	023005	023001	023023	023015	023013	023011
WMSJ	FM	Harpwell	MPR	WBLM	723000	023031	023005	023001	023023	023015	023013	023011
WMTW	AM	Gorham	MPR	WBLM	723000	023031	023005	023001	023023	023015	023013	023011
WMTW	TV	Poland Spring	MPR	WBLM	723000	023031	023005	023001	023023	023015	023013	023011
WNSX	FM	Winter Harbor	MPR	WHCF	923000	023019	023029	023009	023027			
WNZS	AM	Veazie	MPR	WHCF	923000	023019	023029	023009	023027			
WOXO	FM	Norway	MPR	WTOS	123000	023017	023007	023025	023021			
WOZI	FM	Presque Isle	MPR	WQHR	323000	023003	323019					
WPHX	FM	Sanford	MPR	WBLM	723000	023031	023005	023001	023023	023015	023013	023011
WPHX	AM	Sanford	MPR	WBLM	723000	023031	023005	023001	023023	023015	023013	023011
WPOR	FM	Portland	MPR	WBLM	723000	023031	023005	023001	023023	023015	023013	023011
WPXT	TV	Portland	MPR	WBLM	723000	023031	023005	023001	023023	023015	023013	023011
WQCB	FM	Brewer	MPR	WHCF	923000	023019	023029	023009	023027			
WQDY	AM	Calais	MPR	WHCF	923000	023019	023029	023009	023027			
WQDY	FM	Calais	MPR	WHCF	923000	023019	023029	023009	023027			
WQEZ	FM	Kennebunkport	MPR	WBLM	723000	023031	023005	023001	023023	023015	023013	023011
WQHR	FM	Presque Isle	MPR	WQHR	323000	023003	323019					
WQSS	FM	Camden	MPR	WHCF	923000	023019	023029	023009	023027			
WRBC	FM	Lewiston	MPR	WBLM	723000	023031	023005	023001	023023	023015	023013	023011

Monitoring Assignments and FIPS Codes

CALL		City	Primary	Second	Regional	County 1	County 2	County 3	County 4	County 5	County 6	County 7
WRED	FM	Saco	MPR	WBLM	723000	023031	023005	023001	023023	023015	023013	023011
WREM	AM	Monticello	MPR	WQHR	323000	023003	323019					
WRKD	AM	Rockland	MPR	WHCF	923000	023019	023029	023009	023027			
WRUM	AM	Rumford	MPR	WTOS	123000	023017	023007	023025	023021			
WSEW	FM	Sanford	MPR	WBLM	723000	023031	023005	023001	023023	023015	023013	023011
WSHD	FM	Eastport	MPR	WHCF	923000	023019	023029	023009	023027			
WSHK	FM	Kittery	NH WHO	WBLM	723000	023031	023005	023001	023023	023015	023013	023011
WSJB	FM	Standish	MPR	WBLM	723000	023031	023005	023001	023023	023015	023013	023011
WSKW	AM	Skowhegan	MPR	WTOS	123000	023017	023007	023025	023021			
WSYY	AM	Millinocket	MPR	WHCF	923000	023019	023029	023009	023027			
WSYY	FM	Millinocket	MPR	WHCF	923000	023019	023029	023009	023027			
WTBM	FM	Mexico	MPR	WTOS	123000	023017	023007	023025	023021			
WTHT	FM	Lewiston	MPR	WBLM	723000	023031	023005	023001	023023	023015	023013	023011
WTME	AM	Lewiston	MPR	WBLM	723000	023031	023005	023001	023023	023015	023013	023011
WTOS	FM	Skowhegan	MEMA	MPR	123000	023017	023007	023025	023021			
WTVL	AM	Waterville	MPR	WBLM	723000	023031	023005	023001	023023	023015	023013	023011
WUBB	FM	York Center	MPR	WBLM	723000	023031	023005	023001	023023	023015	023013	023011
WUFK	FM	Fort Kent	MPR	WQHR	323000	023003	323019					
WUMF	FM	Farmington	MPR	WTOS	123000	023017	023007	023025	023021			
WUPI	FM	Presque Isle	MPR	WQHR	323000	023003	323019					
WVII	TV	Bangor	MPR	WHCF	923000	023019	023029	023009	023027			
WVOM	FM	Howland	MPR	WHCF	923000	023019	023029	023009	023027			
WWBX	FM	Bangor	MPR	WHCF	923000	023019	023029	023009	023027			
WWMJ	FM	Ellsworth	MPR	WHCF	923000	023019	023029	023009	023027			
WWNZ	AM	Veazie	MPR	WHCF	923000	023019	023029	023009	023027			
WWWA	FM	Winslow	MPR	WTOS	123000	023017	023007	023025	023021			
WYFP	FM	Harpwell	MPR	WBLM	723000	023031	023005	023001	023023	023015	023013	023011
WYNZ	FM	Westbrook	MPR	WBLM	723000	023031	023005	023001	023023	023015	023013	023011
WZAN	AM	Portland	MPR	WBLM	723000	023031	023005	023001	023023	023015	023013	023011
WZON	AM	Bangor	MPR	WHCF	923000	023019	023029	023009	023027			

Monitoring Assignments and FIPS Codes

System	City	Phone	Primary	Second	Regional	County 1	County 2	County 3	County 4
Adelphia	Augusta	207-623-5145	MPR	WBLM	723000	023011			
Adelphia	Kennebunk	207-967-5212	MPR	WBLM	723000	023031			
Adelphia	Lewiston	800-336-9988	MPR	WBLM	723000	023001			
Adelphia	Madawaska	207-726-6322	MPR	WQHR	323000	023003			
Adelphia	Rockland	207-594-2249	MPR	WHCF	923000	023027	023023	023015	023013
Adelphia	Windham	207-882-7573	MPR	WBLM	723000	023005	023013		
Bee Line	Skowhegan	207-474-2727	MPR	WTOS	123000	023007	023025		
Bee Line	Millinocket	207-723-4455	MPR	WHCF	923000	023019			
Polaris	Houlton	207-532-2578	MPR	WQHR	323000	023003	323019		
Lincolnville	Lincolnville	207-753-9900	MPR	WHCF	923000	023027	023013		
Metrocast	Springvale	207-324-3700	MPR	WBLM	723000	023031			
Moosehead	Greenville	207-695-3337	MPR	WTOS	123000	023025	023021		
Pine Tree	Pembroke	207-726-5620	MPR	WHCF	923000	023029	023009		
Sherman	Houlton	207-532-3320	MPR	WQHR	323000	023003	323019		
Susquehanna	Brunswick	800-439-2629	MPR	WBLM	723000	023005	023023		
Time Warner	Portland	207-775-2381	MPR	WBLM	723000	023031	023005		
Time Warner	Moody	207-646-2672	MPR	WBLM	723000	023031			
Adelphia	Conway, NH	603-356-5999	MPR	WBLM	723000	023011			
Adelphia	Conway, NH	603-356-5999	MPR	WTOS	123000	023025	023021		
MetroCast	Laconia, NH	603-524-3767	MPR	WBLM	723000	023011			

APPENDIX D

PROGRAMMING EAS DECODERS; CODES TRANSMITTED BY KEY SOURCES

Note: Sage ENDEC EAS units and TFT units have three filters that have predetermined codes for National Alerts and Required Monthly Tests; all other codes must be defined. Each station must program its unit to accommodate certain alerts. Otherwise, the unit may default to “log only” or “pass all” depending on manufacturer. All other filters must be programmed to accommodate the Maine EAS Plan.

1. EAS HEADER CODE INFORMATION

A. EAS Header Code Analysis

The FCC has mandated that an EAS Header Code contain the following elements sent in the following sequence:

1. [Preamble] ZCZC-ORG-EEE-PSSCCC-TTTT-JJHHMM-LLLLLLLL
2. Attention Signal
3. Aural, Visual, or Text Message
4. [Preamble] NNNN

Explanation:

1. [Preamble]= (Clears the system): Sent automatically by your Encoder.

ZCZC= (Start of ASCII Code): Sent automatically by your Encoder.

ORG= (Originator Code): Preset once by originator, then sent automatically by your Encoder. See section "B" below for codes.

EEE= (Event Code): Determined by originator, each time an alert is sent. See section "C" below for codes.

PSSCCC= (Location Code): Determined by originator, each time an alert is sent. See section "D" below for codes.

TTTT= (Duration of Alert): Determined by originator, each time an alert is sent.

JJHHMM= (Date/Time-of-Day): Sent automatically by your Encoder.

LLLLLLLL= (8-Character ID, identifying the Broadcaster, Cable operator, Weather Service Office, Nuclear/Industrial Plant, or Civil Authority operating that Encoder): Preset once by user, then sent automatically by your Encoder. See section “4” below for codes.

2. Attention Signal: Must be sent if aural, visual or text message is sent.

3. [Preamble]= (Re-clears the system): sent automatically by your Encoder when you receive the End-of-Message sequence.

4. NNNN= (End-of-Message Code): **Must be initiated manually** at the end of **every** EAS Alert originated by all sources. A failure of the system will occur if this code is not sent to reset the Decoders of all station/operators that carried that alert.

[Note: The EAS protocol, including any codes, must not be amended, extended, or abridged without FCC authorization.]

B. Maine Originator Codes (ORG)

Following are the only Originator Codes to be used by sources in the state of Maine:

WXR - To be used by National Weather Services Offices

CIV - To be used by Emergency, State Government, Sheriffs, and all other Civil Authorities

EAS - To be used by all Broadcasters and Cable TV Operators

2. MAINE EVENT CODES (EEE)

Whether used under the authority of the State EAS Plan, or any of the County/Local Area EAS Plans, the following are the **only** Event Codes to be used in the State of Maine by anyone for any purpose. No codes can be added without FCC approval. County/Local Area EAS Plans which desire to use a code not included in this list should submit that code request to the SECC for FCC approval and subsequent addition to this list. This list will be maintained as a "Master List" for all Event Codes used in the State of Maine.

Note: This list is not to be construed as indicative of the events for which EAS should automatically be activated.

1. The FCC requires that broadcasters and cable operators program their EAS Decoders for the following event codes:

"EAN" (National EAS Activation) - Must be re-transmitted immediately.

"EAT" (National EAS Termination) - Must be re-transmitted immediately.

"RMT" (Required Monthly Test) - containing your County of License code. Must be re-transmitted within 60 minutes of receipt.

"RWT" (Required Weekly Test) - containing your County of License code. This received test need only be logged. No re-broadcast is necessary.

2. Event Codes Required by the Maine State Emergency Communications Committee

The following list of event codes is a minimum required list of events for activation of EAS units in Maine.

"TOR" (Tornado Warning) - Must be re-transmitted within 5 minutes.

"FFW" (Flash Flood Warning) - Must be re-transmitted within 5 minutes.

"SVR" (Severe Thunderstorm Warning) - Must be re-transmitted within 5 minutes.

"SMW" (Special Marine Warning) – Must be re-transmitted within 5 minutes.

"CEM" (Civil Emergency Message) - Must be re-transmitted immediately.

"CAE" (Child Abduction Emergency) – Must be retransmitted immediately.

3. County Location Codes to Use

Required event codes must be programmed into the EAS unit for the station's local county. Additionally, when programming EAS equipment, other counties in the "service area" of the broadcast station should be considered. See Section 4, "Local Codes," on next page.

4. Other Authorized Event Codes

In addition to the required codes shown in C.1. and C.2. above, the following Event Codes are presently authorized by the FCC and the Maine SECC:

National codes:

NIC: National Information Center

NPT: National Periodic Test

Local codes:

ADR: Administrative Message

BZW: Blizzard Warning

CFW: Coastal Flood Warning

DMO: Practice/Demo Warning

EVI: Evacuation Immediate

FFA: Flash Flood Watch

FFS: Flash Flood Statement

FLA: Flood Watch

FLS: Flood Statement

FLW: Flood Warning

HLS: Hurricane Statement

HUA: Hurricane Watch

HUW: Hurricane Warning

HWA: High Wind Watch

HWW: High Wind Warning

SPS: Special Weather Statement

SVA: Severe Thunderstorm Watch

SVS: Severe Weather Statement

TOA: Tornado Watch

WSA: Winter Storm Watch

WSW: Winter Storm Warning

3. MAINE REGIONAL CODES (PSSCCC)

The first digit (P) can be used to indicate either statewide coverage or one of the four regions of the state shown in Appendix F, as follows:

0=Statewide

1=Northwest

3=Northeast

7=Southwest

9=Southeast

The remaining 5 digits (SSCCC) indicate the state code (SS), which for Maine is 23, and the county code, which, under the regional format shown above, will be 000 (zero-zero-zero) to designate all or an unspecified portion of the state.

Thus, the five state and regional codes are as follows:

023000: Statewide

123000: Northwest region

323000: Northeast region

723000: Southwest region

923000: Southeast region

4. LOCAL CODES

Originator Codes:

Maine Emergency Management Agency - MEMA

Maine State Police - MSP

National Weather Service - WXR

Broadcaster - Call Sign of Station

Cable Operator - Company Name [Example: "Adelphia" for Adelphia Cable]

STATE EAS NETWORK

State Primary--Maine Public Radio

WMEA-FM, 90.1, Portland
WMEW-FM, 91.3, Waterville
WMEH-FM, 90.9, Bangor
WMED-FM, 89.7, Calais
WMEM-FM, 106.1, Mars Hill
WMEF-FM, 106.5, Fort Kent
WMEP-FM, 90.5, Camden

Alternate State Primary Stations

WBLM-FM, 102.9, Portland
WTOS-FM, 105.1, Skowhegan
WHCF-FM, 88.5, Bangor
WQHR-FM, 96.1, Presque Isle

NOAA Weather Stations

162.550 MHz, Portland
162.475 MHz, Dresden
162.400 MHz, Ellsworth
162.525 MHz, Caribou
162.475 MHz, Frenchville
162.450 MHz, Milo
162.500 MHz, Springfield
162.425 MHz, Meddybemps
162.525 MHz, Greenville
162.550 MHz, Downeast Coast

State Relay Network

See Appendix K.

All Maine broadcasters and cable operators must monitor at least one SP and one Alternate SP (see Appendix F). In addition, broadcasters and operators are encouraged to monitor a NOAA Weather Station to provide regional weather warnings for your area.

WQHR-FM, Presque Isle, must monitor NOAA Weather/Caribou and act as the primary relay for information from the NWS Office in Caribou.

APPENDIX F

EAS OPERATIONAL AREAS

Maine broadcast stations are included in one of the four Operational Areas shown on the next page based on the location of their city of license. Cable operators are included in EAS Operational Areas based on franchise area.

Area One: Northeast

Includes Aroostook County and that portion of Penobscot County north of Latitude N45°-40”

Alternate SP monitoring assignment: WQHR-FM

Area Two: Southeast

Includes Washington, Hancock, Knox and Waldo Counties and that portion of Penobscot County south of Latitude N 45°- 40”.

Alternate SP monitoring assignment: WHCF-FM

Area Three: Northwest

Includes Somerset, Franklin, Piscataquis and Oxford Counties.

Alternate SP monitoring assignment: WTOS-FM

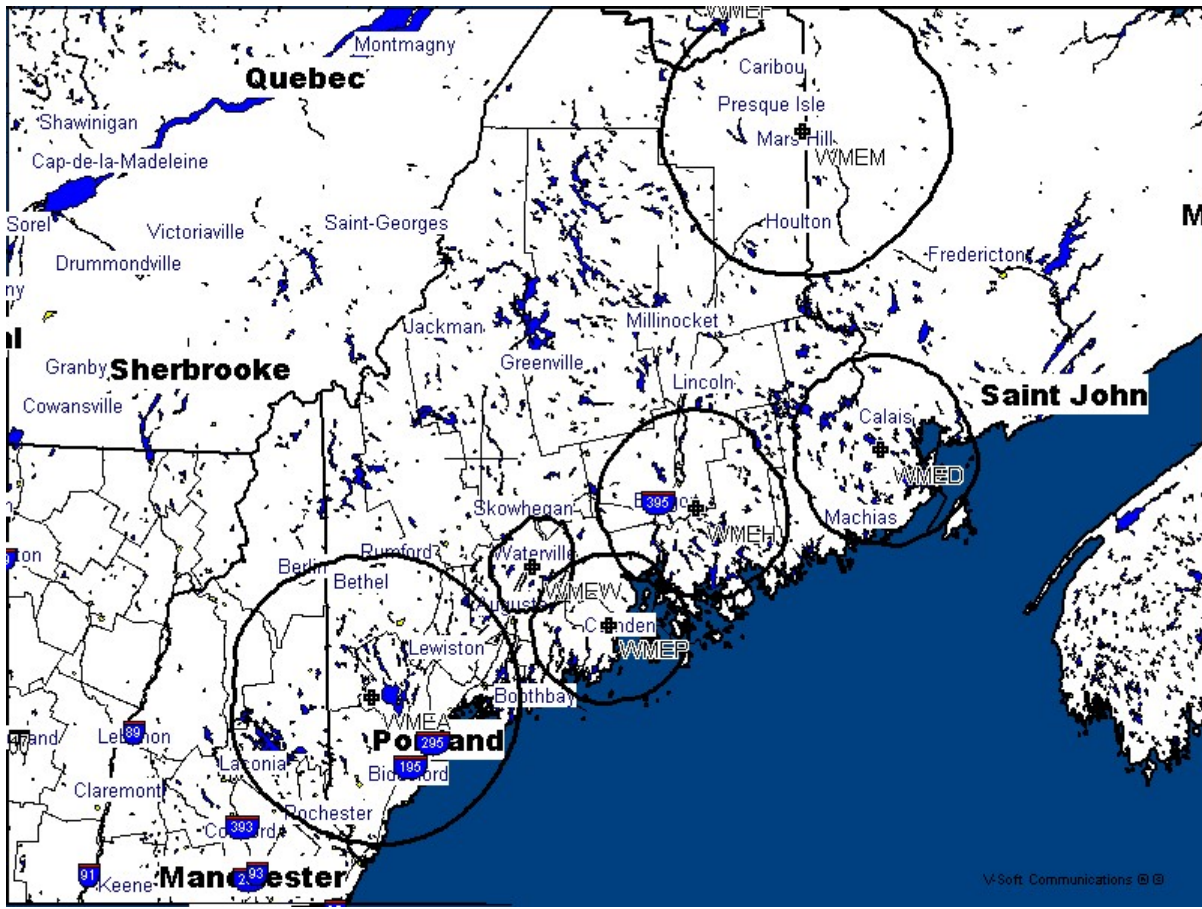
Area Four: Southwest

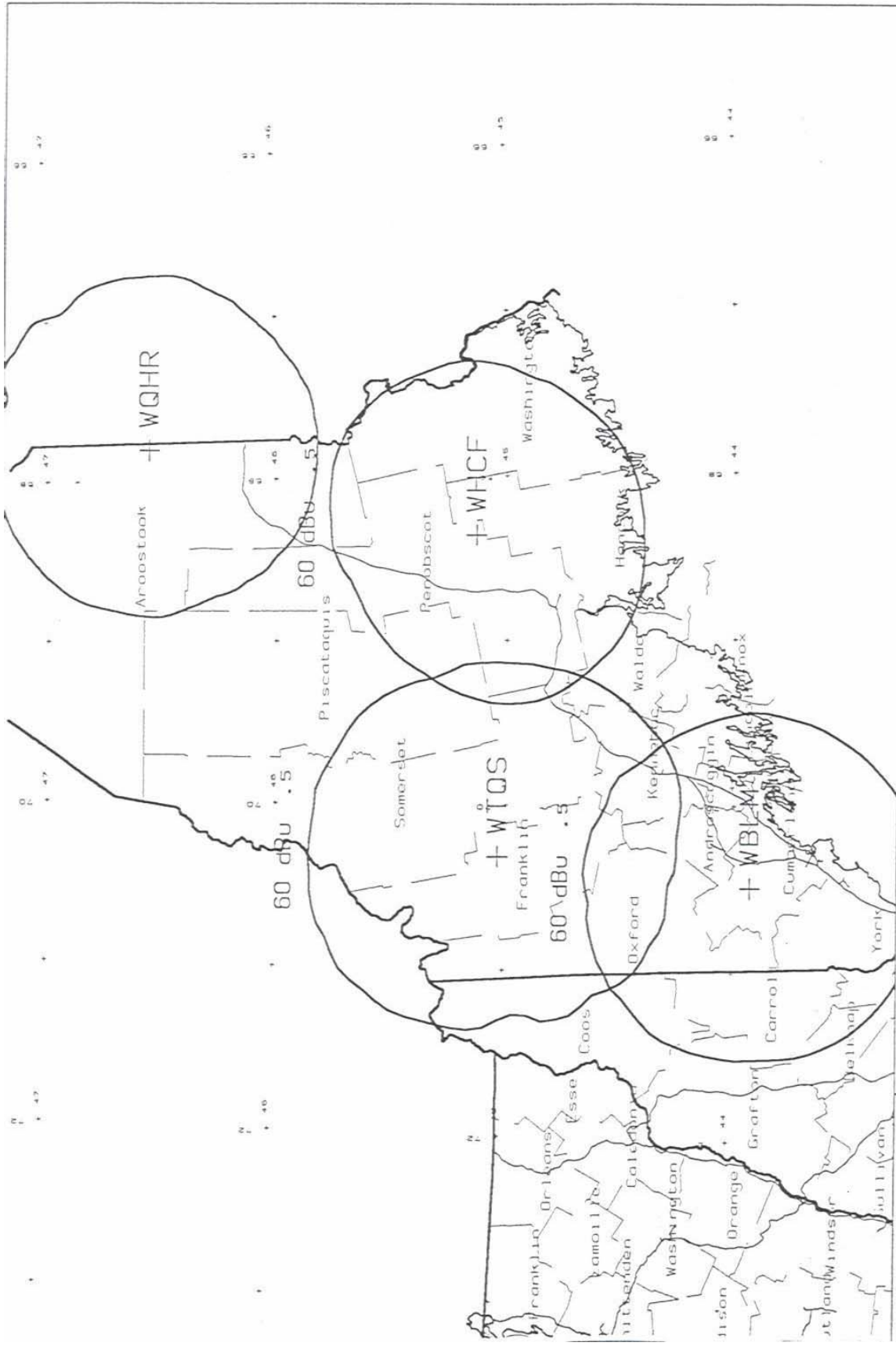
Includes York, Cumberland, Androscoggin, Kennebec, Sagadahoc and Lincoln Counties

Alternate SP monitoring assignment: WBLM-FM

See maps on following pages

Coverage Areas of the State Primary Network





Scale in km 0 20 40 60 80 100	275C 1kW	SECONDARY EAS COVERAGE
N. Lat. 45 15 00	W. Lng. 69 15 00	GIL MAXWELL - 01/97

APPENDIX G

COMMUNICATIONS BETWEEN THE MAINE EMERGENCY MANAGEMENT AGENCY, THE MAINE STATE POLICE, THE NATIONAL WEATHER SERVICE, AND THE BROADCAST AND CABLE FACILITIES OF THE STATE OF MAINE

1. Both land line and cellular telephone service exists between the Maine Emergency Management Agency, the Maine State Police, the NWS Field Offices in Gray and Caribou, and the broadcast and cable facilities of the state.

Maine State Police (Primary Maine State Warning Point)	800-452-4664
Maine Emergency Management Agency, Augusta (Secondary Maine State Warning Point)	207-624-4400
Maine Public Radio (SP), Bangor	207-941-1010
National Weather Service, Gray	207-688-3216
National Weather Service, Caribou	207-496-8931
WBLM-FM, Portland	207-774-6364
WTOS-FM, Skowhegan	207-623-9000
WHCF-FM, Bangor	207-947-2751
WQHR-FM, Presque Isle	207-769-6600

2. Radio communications link the Maine Emergency Management Agency's State Emergency Operations Center in Augusta with the State Primary (the Maine Public Radio studios in Bangor).
3. An emergency telephone circuit is available between the State EOC, MSP, and the NWS in Gray.

APPENDIX H

PROGRAMMING EAS DECODERS

This section is provided to aid users of the EAS, primarily broadcasters and cable operators, in programming the Event Codes, County-Location Codes, and Modes of Operation into their EAS Decoder. Regardless of the EAS hardware in use, each EAS Alert will require programming to include those three elements.

All EAS Decoders must be capable of operating in at least two modes, Manual and Automatic.

MANUAL OPERATION: In the manual mode the EAS unit will only notify the operator of any incoming EAS Alert that has been programmed into it. The operator must take appropriate action to cause the Alert to be re-transmitted over the station/cable system.

AUTOMATIC OPERATION: This type of operation is normally used with a program interrupt connection on the EAS unit. On-air audio and/or video is "looped through" the EAS unit so that the unit can interrupt the audio/video when necessary. In Automatic operation, when the EAS decoder is triggered by an EAS Alert, the unit immediately interrupts programming to transmit the EAS Alert.

SEMI-AUTOMATIC OPERATION: Some manufacturers offer a semi-automatic mode of operation in which the unit will begin a preset countdown to an automatic interrupt after receiving an EAS Alert. The operator should run the EAS Alert on the air manually at the earliest convenience. If the Alert is not run when the preset countdown time expires, the EAS unit will take over and transmit the EAS Alert automatically.

NOTE: BROADCASTERS USING "UNATTENDED OPERATION" MUST RUN THEIR EAS DECODER IN AUTOMATIC MODE OR SEMI-AUTOMATIC MODE.

APPENDIX I

EAS Tests

1. General notes

An ad hoc test of the Maine Emergency Alert System will be conducted once in each six-month period. If the result of that test is unsatisfactory, the State EOC may request an additional test during the period. The ad hoc test replaces the required monthly test for that month only.

Required Monthly Tests (RMTs) will be initiated by the State Primary (SP) based upon a schedule approved by the SECC. See Appendix J.

Each station will schedule the required weekly tests (RWTs) at its discretion. See Section 3 below.

Any special tests will be coordinated in advance with the SECC and the Maine Emergency Management Agency.

All tests of the Maine Emergency Alert System are subject to FCC record-keeping requirements. All EAS tests received or transmitted shall be logged in accordance with current FCC criteria.

2. Requirements

The following requirements regarding both RWTs (required weekly test) and RMTs (required monthly test) apply to all cable operators and all broadcasters, "PN", as well as "NN" stations.

Even stations that have elected not to participate in local EAS alerts must still rebroadcast their local RMT every month.

Exceptions to these requirements are set forth in the FCC's Part II Rules.

3. Required Weekly Test (RWT)

1. Transmission: All broadcasters and cable operators must transmit an RWT once each week at random days and times except for the week of the RMT test. There are no time-of-day or week day restrictions. This is a 10.5-second test, consisting only of the EAS Header and End-of-Message Codes and using the "RWT" event code (see FCC Rules § 11.31). An appropriate entry regarding transmission must be made in the Station Log.
2. Reception: All broadcasters and cable operators receiving a RWT from one of their monitored sources must log receipt of this test. No further action is required.

4. Required Monthly Test (RMT)

1. Transmission: RMTs will be initiated by the **SWP (State Police), alternate SWP (MEMA), SP (MPBC) and National Weather Service** in a rotating schedule. During the designated week for this test, third week of the month, all other broadcasters and cable operators are to wait for this test and then react as described in (4.) below. These tests will use the Event Code "RMT".

2. Scheduling of RMTs / Week and Time-of-Day:

RMTs shall always occur during the third, full, Sunday-thru-Saturday week of the month. Time frame and origination of the RMT tests shall adhere to the following format:

MONTH	TIME FRAME	ORIGINATING STATION
JANUARY	DAY / 8:30 AM to Local Sunset	MPBC
FEBRUARY	NITE / Local Sunset to 8:30 AM	NWS Gray
MARCH	DAY / 8:30 AM to Local Sunset	MEMA
APRIL	NITE / Local Sunset to 8:30 AM	State Police
MAY	DAY / 8:30 AM to Local Sunset	MPBC
JUNE	NITE / Local Sunset to 8:30 AM	NWS Gray
JULY	DAY / 8:30 AM to Local Sunset	MEMA
AUGUST	NITE / Local Sunset to 8:30 AM	State Police
SEPTEMBER	DAY / 8:30 AM to Local Sunset	MPBC
OCTOBER	NITE / Local Sunset to 8:30 AM	NWS Gray
NOVEMBER	DAY / 8:30 AM to Local Sunset	MEMA
DECEMBER	NITE / Local Sunset to 8:30 AM	State Police

The Originating Station will send the RMT at its discretion. The SP Stations must then rebroadcast this test within 60* minutes of receiving it.

*The Federal Communications Commission's EAS Report and Order issued February 26, 2002, increased the time for retransmitting RMTs from 15 minutes to 60 minutes from the time of receipt of the RMTs. FCC 02-64, EB Docket No. 01-66, at Paragraph 49.

3. Scheduling of RMTs / Recommended Time Constraints:

The Originating Station is requested to use discretion in scheduling times for RMTs. Since all broadcasters and cable operators are required to rebroadcast this test within 60 minutes of receiving it, care should be taken not to put undue hardship on broadcasters when they are carrying their highest-revenue programming. On a daily basis, these

periods would include all major newscasts: early morning, noon-time, evening, and late-evening. In addition, the times of major events should be avoided, such as pre-planned Presidential speeches, times of a major national or local news story carried outside of normal newscast hours, local and national election coverage, and major sporting events like World Series games and the Super Bowl. Whenever possible, the RMT should be scheduled within ten minutes prior to the top or bottom of the hour.

Broadcasters and cable operators which have a complaint regarding the scheduling of RMTs in their Area should make their concerns known to the SECC Chairs (see "The Maine SECC" section in this Plan for names). If a satisfactory resolution is not reached at that level, the State EAS Chair should be contacted.

4. Reception / Re-transmission of RMTs

All broadcasters and cable operators receiving an RMT test must re-transmit this test within 60 minutes of receiving it. [For Daytime-only stations receiving a nighttime RMT, this test may* be re-transmitted within 60 minutes of the Daytime-only station's sign-on.]

Transmission of this RMT test takes the place of the Required Weekly Test (RWT) for that week. Times should be logged for both the receipt and re-transmission of the RMT test.

Broadcast and cable management should impress upon their staff that re-transmission of this test is mandatory. It is an FCC violation to fail to re-transmit this test within 60 minutes of receiving it (or, for daytime-only operations, within 60 minutes of sign-on).

The best policy may be to set your EAS unit for a 60-minute automatic countdown upon receiving an RMT. If the operator on duty does not send the test manually within that window, the EAS unit will do it when time runs out.

**As of 3/97, the FCC has changed the requirement that daytime-only stations must retransmit an RMT received overnight. The change from "must" to "may" was permitted "because in some cases the equipment will not allow transmission of outdated messages. Stations can send an RWT in place of the RMT if they wish." (Correspondence from Frank Lucia, FCC, to Gil Maxwell, 3/18/97)*

5. Time-Duration and County-Location Codes to be Used

- TIME-DURATION used in the EAS Header Code for all EAS Tests shall be 30 MINUTES.
- COUNTY-LOCATION codes used in the EAS Header Code for EAS Tests shall conform to these guidelines:

SP Stations:

All tests, RWT and RMT, shall use the Location Code for the entire state.

Alternate SP Stations:

All tests shall include the Location Code for all counties in that Alternate SP station's Local Area of responsibility. To determine the counties in their Local Area of responsibility, each station should consult the "Boundary Map of Maine EAS Local Areas," found in Appendix F of this Plan, and/or the FIPS code lists, found in Appendix B for Broadcasters and Appendix C for Cable operators of this Plan.

PN and NN Stations and Cable Operators:

RMT tests shall be re-transmitted unchanged, except for the "L-Code". Thus, RMTs will include all counties present in the original message. For the RWT originated each week by each PN and NN station, and each cable operator, the region-location code used shall be the region for the broadcaster's City of License, or cable operator's Community of Franchise. Other counties in the station's or system's service area may be added at management discretion.

6. Test scripts and formats

The following test scripts and formats shall be used by all Maine broadcasters, cable operators, and emergency agencies when originating EAS tests.

1. Required Weekly Test (RWT):

No script is used for the RWT. Entire test takes 11 seconds.

Format is as follows:

- Stop regular programming
- One-second pause
- Send EAS Header Code 3 times
- One-second pause
- Send EAS End-of-Message (EOM) Code 3 times
- One-second pause
- Resume normal programming

2. Required Monthly Test (RMT): SP and SR stations and emergency agencies originating this test should use the following format.

All other broadcasters and cable operators will receive the test in this format and must retransmit it within 60 minutes of reception in the same format.

Format is as follows:

- Stop regular programming
- Optional local intro: **“THIS IS A TEST OF THE MAINE EMERGENCY ALERT SYSTEM.”**
- One-second pause
- Send EAS Header Code 3 times [all sources must use Event Code “RMT” for this test].
- One-second pause
- Send EAS Attention Signal
- Read test script: **“THIS IS A COORDINATED MONTHLY TEST OF THE EMERGENCY ALERT SYSTEM FOR THE STATE OF MAINE. IF THIS HAD BEEN AN ACTUAL EMERGENCY, OFFICIAL MESSAGES WOULD HAVE FOLLOWED THE ALERT TONE. THIS CONCLUDES THIS TEST OF THE EMERGENCY ALERT SYSTEM.”**
- One-second pause
- Send EAS End-of-Message (EOM) Code 3 times
- Resume normal programming

APPENDIX J

Members of the State Emergency Communications Committee

Tristan Richards
Director of Operations
Maine Public Broadcasting
65 Texas Ave.
Bangor, ME 04401
ph. 207-941-1010 ext. 3060
fax 207-942-2857

Lt. Raymond Bessette
Maine State Police
36 Hospital St.
Augusta, ME 04333-0042
ph. 207-624-7061
fax 624-7137

Mike Timberlake
Technical Supervisor
Adelphia Cable
83 Anthony Ave.
Augusta, ME 04330
ph. 207-623-3685 ext.337
fax 207-623-3407

Maria Jacques
E 9*1*1 Database Manager
Emergency Services Communic. Bureau
15 Oak Grove Road, Rm B132
Vassalboro, ME 04989
ph. 207-877-8061
fax 207-877-8060

Joseph Grimmig
Communications Director
Emergency Management Agency
72 State House Station
Augusta, ME 04333-0072
ph. 207-624-4503
fax 207-626-4499

Hendricus Lulofs
Warning Coordination Meteorologist Maine
National Weather Service
810 Main Street
Caribou, ME 04736
ph. 207-492-0139

John Jensenius
Warning Coordination Meteorologist
National Weather Service
PO Box 1208
Gray, ME 04021
207-688-3222 ext.223

Suzanne Goucher
President & CEO
Maine Association of Broadcasters
69 Sewall St.
Augusta, ME 04330
ph. 207-623-3870
fax 207-621-0585

APPENDIX K -- State Relay Network

MAINE STATE RELAY NETWORK

STATE PRIMARY SOURCE (S)

WHCF	BANGOR	88.5
WBLM	PORTTLAND	102.9
WQHR-FM	PRESQUE ISLE	96.1
WTOS-FM	SKOWHEGAN	105.1

STATE RELAY SOURCE (S)

WMEH	BANGOR	90.9
WMED	CALAIS	89.7
WMEF	FORT KENT	106.5
WMEA	PORTLAND	90.1
WMEM	PRESQUE ISLE	106.1
WMEW	WATERVILLE	91.3

LOCAL PRIMARY SOURCE (S) -2

LOCAL PRIMARY SOURCE (S) -3

APPENDIX L: FCC Mapbook for Maine

Consists of seven (7) pages following this page.

BROADCAST STATIONS – NORTH EAST LOCAL AREA

CALL SIGN
 FIPS CODE
 CITY OF LICENSE
 FREQUENCY
 FACILITIES
 EAS DESIGNATION

WCXU
 23003
 CARIBOU
 97.7
 20. DW 97 Meters
 PN

WMEM-TV
 23003
 PRESQUE ISLE
 CH 10
 316 KW 332 Meters
 PN

WAGM-TV
 23003
 PRESQUE ISLE
 CH 08
 58.9 KW 107 Meters
 PN/BSPP

WMEF
 23003
 FORT KENT
 106.5
 25.0 KW 92 Meters
 SR

WUPI
 23003
 PRESQUE ISLE
 92.1
 .017 KW -12 Meters
 PN

WOZI
 23003
 PRESQUE ISLE
 101.7
 1.35 KW 128 Meters
 PN

WHOU-FM
 23003
 HOULTON
 100;1
 25. KW 92 Meters
 PN/BSPP

WFST
 23003
 CARIBOU
 600
 0.127/5. KW ND-1 U
 PN

WBPW
 23003
 PRESQUE ISLE
 96.9
 100.KW 134 Meters
 PN

WREM
 23003
 MONTICELLO
 710
 5. KW ND-D D
 PN

WUFK
 23003
 FORT KENT
 92.1
 .013 KW -98 Meters
 PN

WMEM
 23003
 PRESQUE ISLE
 106.1
 100. KW 329 Meters
 SR

WEGP
 23003
 PRESQUE ISLE
 1390
 5./5. KW DA-N U
 PN

WCXX
 23003
 MADAWASKA
 102.3
 1.75 KW 117 Meters
 PN

WQHR-FM
 23003
 PRESQUE ISLE
 96.1
 95. KW 399 Meters
 LP-1/SP

BROADCAST STATIONS – NORTH WEST LOCAL AREA

CALL SIGN
 FIPS CODE
 CITY OF LICENSE
 FREQUENCY
 FACILITIES
 EAS DESIGNATION

WUMF-FM
 23007
 FARMINGTON
 100.5
 .013 KW -58 Meters
 NN

WOXO-FM
 23017
 NORWAY
 92.7
 2.00 KW 110 Meters
 PN

WWMR
 23017
 RUMFORD
 96.3
 100. KW 437 Meters
 PN

WTOS-FM
 23025
 SKOWHEGAN
 105.1
 50. KW 741 Meters
 LP-1/SP

WDME-FM
 23021
 DOVER-FOXCROFT
 103.1
 4.8 KW 109 Meters
 PN

WIGY
 23025
 MADISON
 97.5
 6. KW 100 Meters
 PN

WJCX
 23025
 PITTSFIELD
 99.5
 3.0 KW 74 Meters
 PN

WHQO
 23025
 SKOWHEGAN
 107.9
 6.0 KW 203 Meters
 PN

WKTQ
 23017
 SOUTH PARIS
 1450
 1. KW ND-1 U
 PN

WKTJ-FM
 230037
 FARMINGTON
 99.3
 1.50 KW 122 Meters
 PN

WTBM
 23017
 MEXICO
 100.7
 .180 KW 393 Meters
 PN

WRUM
 23017
 RUMFORD
 790
 1. KW ND-D D
 PN/BSPP

WSKW
 23025
 SKOWHEGAN
 1160
 0.73/10. KW ND-1 U
 PN

BROADCAST STATIONS – SOUTH EAST LOCAL AREA

CALL SIGN
FIPS CODE
CITY OF LICENSE
FREQUENCY
FACILITIES
EAS DESIGNATION

CALL SIGN	FIPS CODE	CITY OF LICENSE	FREQUENCY	FACILITIES	EAS DESIGNATION
WABI	23019	BANGOR	910	5./5. KW DA-N U	PN
WQDY-FM	23029	CALAIS	92.7	3.00 KW 91 Meters	PN
WABR	23019	BANGOR	910	5./5. KW DA-N U	PN
WQDY-FM	23029	CALAIS	92.7	3.00 KW 91 Meters	PN
WMEH	23019	BANGOR	90.9	13.5 KW 259 Meters	SR
WBGR-LP	23019	BANGOR/DEDHAM	CH 33	16.6 KW Meters	PN
WZON	23019	BANGOR	620	5./5. KW DA-N U	PN/BSPP
WHSN	23019	BANGOR	8903	.140 KW 21 Meters	PN
WBME	23027	BELFAST	1230	1. KW ND-1 U	PN
WVII-TV	23019	BANGOR	CH 07	316 KW 250 Meters	PN
WKIT-FM	23019	BREWSTER	100.3	16.0 KW 269 Meters	PN
WLKE	23009	BAR HARBOR	99.1	16.5 KW 123 Meters	PN
WMED	23029	CALAIS	89.7	30.0 KW 160 Meters	SR
WBFB	23027	BELFAST	104.7	10.0 KW 335 Meters	PN
WNSW	23019	BREWSTER	1200	10. KW 134 Meters	PN
WMED-TV	23029	CALAIS	CH 13	100 KW 134 Meters	PN
WQSS	23013	CAMDEN	102.5	7.9 KW 366 Meters	PN
WEZQ	23019	BANGOR	92.9	20.0 KW 240 Meters	PN
WBBX	23019	BANGOR	97.1	5.0 KW 149 Meters	PN
WMDI	23009	BAR HARBOR	107.7	11.5 KW 149 Meters	PN
WERU-FM	23009	BLUE HILL	89.9	15.0 KW 274 Meters	PN

BROADCAST STATIONS – SOUTH EAST LOCAL AREA

CALL SIGN
FIPS CODE
CITY OF LICENSE
FREQUENCY
FACILITIES
EAS DESIGNATION

WQCB
23019
BREWER
106.5
100 KW 329 Meters
PN

WQDY
23029
CALAIS
1230
1.1 KW ND-1 U
PN/BSPP

WGUY
23019
DEXTER
102.1
26.5 KW 205 Meters
PN

WSHD
23029
EASTPORT
91.7
.010 KW 30 Meters
NN

WWMJ
23009
ELLSWORTH
95.7
11.5 KW 314 Meters
PN

WBZN
23019
OLD TOWN
107.3
50.0 KW 133 Meters
PN

WMCM
23013
ROCKLAND
103.3
20.5 KW 235 Meters
NN

WAVX
23013
THOMASTON
106.9
29.5 LW 193 Meters
PN

WDEA
23009
ELLSWORTH
1370
5.5 KW DA-2 U
PN

WVOM
23019
HOWLAND
103.9
54 KW 460 Meters
PN

WSYY
23019
MILLINOCKET
1240
1 KW ND-1 U
PN

WMEB-FM
23019
ORONO
91.9
0.38 KW 20 Meters
PN

23013
ROCKLAND
1450
1 KW ND-1 U
NN

WDSQ
23009
ELLSWORTH
94.5
11.5 KW 313 Meters
PN

WALZ
23029
MACHIAS
95.3
3.00 KW 67 Meters
PN

WSYY-FM
23019
MILLINOCKET
94.9
25.0 KW 211 Meters
PN

WMEB-TV
23019
ORONO
CH 12
316 KW 302 Meters
PN

WBYA
25027
SEARSPORT
101.7
1.35 KW 213 Meters
PN

WRKD

BROADCAST STATIONS – SOUTH WEST LOCAL AREA

CALL SIGN
 FIPS CODE
 CITY OF LICENSE
 FREQUENCY
 FACILITIES
 EAS DESIGNATION

		WBQQ
	WCBB	23031
WKZS	23011	KENNEBUNK
23001	AUGUSTA	99.3
AUBURN	CH 10	3.0 KW 100 Meters
99.9	316 KW 305 Meters	PN
50.0 KW 150 Meters	PN	
PN		WEZW
	WMDR	23011
WKCG	23011	AUGUSTA
23011	AUGUSTA	1400
AUGUSTA	1340	1.KW ND-1 U
101.3	1.KW ND-1 U	PN/PN
50. KW 98 Meters	PN/BSPP	
PN		WMME-FM
	WJTO	23011
WBCI	23023	AUGUSTA
23023	BATH	92.3
BATH	730	50. KW 152 Meters
105.9	1.KW ND-D D	PN
50. KW 152 Meters	NN	
PN		WMEA-TV
	WVAE	23031
WCYY	23031	BIDDEFORD
23031	BIDDEFORD	CH 26
BIDDEFORD	1400	692 KW 244 Meters
94.3	1.DW ND-1 U	PN
12. KW 144 Meters	PN	
PN		WCLZ
	WBOR	23005
WCME	23005	BRUNSWICK
23015	BRUNSWICK	900
BOOTHBAY HARBOR	91.1	0.066/1. KW ND-1 U
96.7	.300 KW 47 Meters	PN
15.5 KW 127 Meters	PN	
PN		WFAU
	WABK-FM	23011
WCLZ-FM	23011	GARDINER
23005	GARDINER	1280
BRUNSWICK	104.3	5./5. KW DA-N U
98.9	50. KW 113 Meters	PN
48. KW 122 Meters	PN	
PN		WMPG
	WLAM	23005
WMSJ	23005	GORHAM
23005	GORHAM	90.9
HARPSWELL	870	1.00 KW 71 Meters
91.9	1./10. KW DA-2 U	NN
6.0 KW 44 Meters	PN	
PN		

WQEX

BROADCAST STATIONS – SOUTH WEST LOCAL AREA

CALL SIGN		
FIPS CODE		
CITY OF LICENSE		
FREQUENCY		
FACILITIES		
EAS DESIGNATION		
23031	PORTLAND	90.1
KENNEBUNKPORT	1490	24.5 KW 578 Meters
104.7	1.KW ND-1 U	SR
6. KW 87 Meters	PN	
PN		
	WZAN	WPOR-FM
WXBB	23005	23005
23031	PORTLAND	PORTLAND
KITTERY	970	101.9
105.3	5./5. KW DA-N U	33. KW 184 Meters
2.20 KW 113 Meters	PN	PN
PN		
	WCYI	WRED
WTHT	23001	23031
23001	LEWISTON	SACO
LEWISTON	93.9	95.9
107.5	27.5 KW 193 Meters	3.3 KW 91 Meters
35. KW 126 Meters	PN	PN
PN		
	WCNM	WRBC
WHMX	23001	23001
23015	LEWISTON	LEWISTON
LINCOLN	1240	91.5
105.7	1.KW ND-1 U	.120 KW 5 Meters
50. KW 126 Meters	PN	PN
PN		
	WKTQ	WLAM
WMTW-TV	23015	23001
23005	LINCOLN	LEWISTON
POLAND SPRING	1450	1470
CH 08	1.KW ND-1 U	5. KW DA-1 U
105 KW 1173 Meters	PN	PN
PN		
	WBLM	WLAM-FM
WJBQ	23005	23005
23005	PORTLAND	NORTH WINDHAM
PORTLAND	102.9	106.7
97.9	100. KW 436 Meters	0.81 KW 190 Meters
16.0 KW 271 Meters	SP/LP-1	PN
PN		
	WGAN	WCSH-TV
WLOB	23005	23005
23005	PORTLAND	PORTLAND
PORTLAND	560	CH 06
1310	5./5. KW DA-2 U	100 KW 610 Meters
5./5. KW ND-1 U	PN	PN
PN		
	WMEA	WGME-TV
WPOR	23005	23005
23005	PORTLAND	PORTLAND

BROADCAST STATIONS – SOUTH WEST LOCAL AREA

CALL SIGN
FIPS CODE
CITY OF LICENSE
FREQUENCY
FACILITIES
EAS DESIGNATION

CH 13
316 KW 491 Meters
PN/BSPP

01.3
3.00 KW 91 Meters
SR

106.3
3.00 KW 91 Meters
PN

WMGX
23005
PORTLAND
93.1
50. KW 135 Meters
PN

WJAE
23005
WESTBROOK
1440
5./5. KW DA-N U
PN

WEBB
23011
WATERVILLE
98.5
61. KW 93 Meters
PN

WPXT
23005
PORTLAND
CH 51
3020 KW 280 Meters
PN

WPHX
23031
SANFORD
1220
0.234/1. KW ND-1 U
PN

WTVL
23011
WATERVILLE
1490
1. KW ND-1 I
PN

WPHX
23031
SANFORD
92.1
1.20 KW 160 Meters
PN

WJJB-FM
23023
TOPSHAM
95.5
3.0 KW 139 Meters
PN

WUBB
23031
YORK CENTER
95.3
1.40 KW 208 Meters
PN

WSEW
23031
SANFORD
88.5
.100 KW 118 Meters
PN

WMHB
23011
WATERVILLE
91.5
.010 KW 32 Meters
PN

WSJB-FM
23005
STANDISH
91.5
0.36 KW 26 Meters
PN

WYNZ
23005
WESTBROOK
100.9
25. KW 100 Meters
PN

WMEW
23011
WATERVILLE

WBQW
23005
SCARBOROUGH